

# An Illustrated History of the Carson Yards

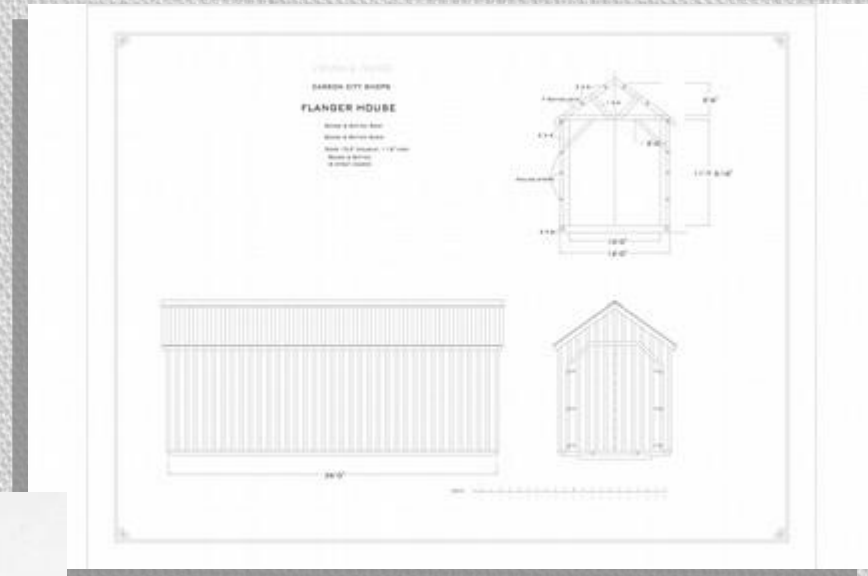


2016 Virginia and Truckee Railroad History Conference

By Curtis Reid



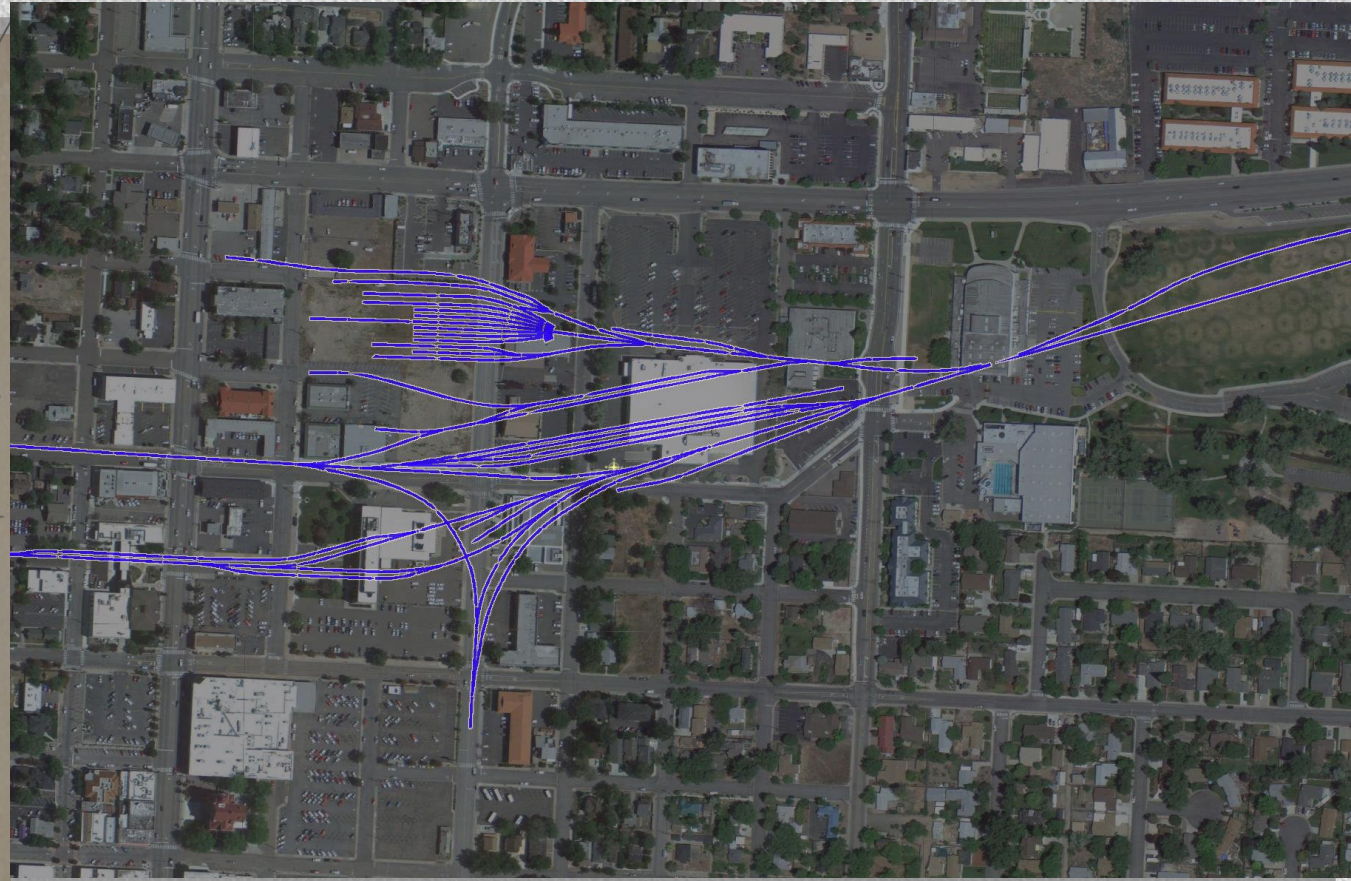
Special thanks to:  
Mike Collins  
Stephen Drew





# Location:

Carson City; the middle of it all!





# 1869



- Ground broken in Carson
- Tracks laid to Gold Hill; regular service started



# 1871



- Tracks laid down Stewart St. to Clear Creek Flume



# 1872



- Tracks added down Washington Street to Reno
- Freight house moved from Steamboat
- Passenger depot built; with sleeper track



# 1873



- Roundhouse completed; turntable installed
- Ash Canyon Creek adjacent to Passenger Depot is covered





# 1874



- Wood sidewalks added in the yards
- Passenger depot is lengthened
- Boiler house built
- C&TL&F office built

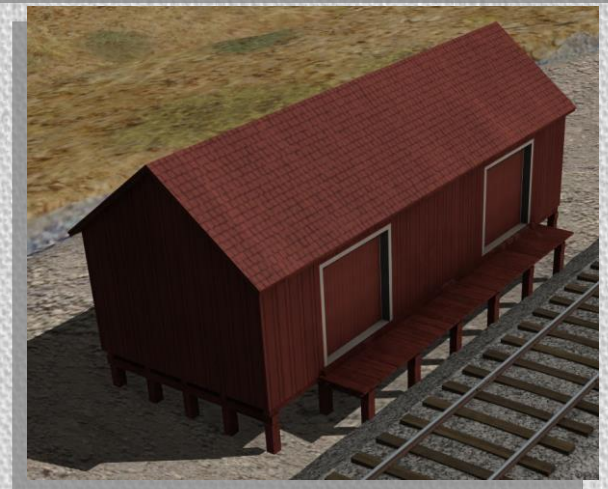




# 1875



- Material yards, Foundry Shed, Paint Shop, Sand House built
- 1 Water Tower in place by now





# 1877



- New material yards
- Addition to the rear of the Paint Shop





# 1882



- Ormsby is now the shop boiler
- Bracing added to Paint Shop



# 1887



- Wheel Grinding Shed added
- Water Tower replaced
- Oil House added





# 1891



- Derrick House addition added
- Roofs start being painted green





# 1897 (early)



- 5740' of new track added for the Corbett fight
- Freight depot platform extended to the East about now? Or later for the Tonopah boom?



# 1897



- All but 900' of the Fight Track is removed



# 1904



- Coal hoist obtained from the SP
- Yard tracks added for the Tonopah Boom?





# 1905



- Flanger House built
- Construction started on the Minden Branch





# 1906



- Minden branch completed
- Oil tank built
- Stall 11 cribbing removed by now?





# 1907



- In-ground oil storage tank added



# 1910



- Motorcar house built
- Roofs start getting painted red





# 1911



- Paint Shop painted red
- Carson St. paved



# 1917



- House built for Motorcar No. 23

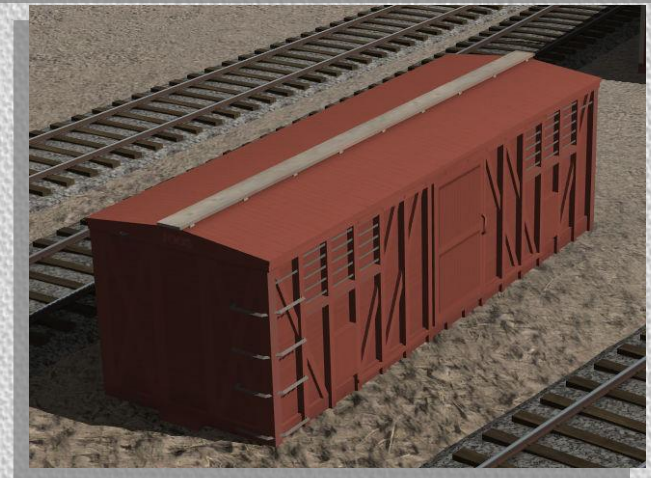




# 1918



- Boxcar 1009 is detrucked adjacent the tool house





# 1925



- Three tracks routed around the turntable



# 1936



- Paint Shop closed for good
- Express car No. 2 sold for use as a house
- Freight Depot has 'Carson' on the roof by now
- Armory Hall burns down around now





# 1937



- Motorcar 23 shed reversed, track removed
- Valuation House painted red sometime around now





# 1938



- Foundry closed for good
- Lakeview Tool House moved to Carson
- Boxcar 1009 retrucked and sold
- Moundhouse Passenger Depot sold and moved to Carson





# 1939



- Flanger shed sold
- Civic Auditorium built



# 1940



- Wells Fargo shed is removed



# 1941



- Material yard is a private lumber yard by now.



# 1943



- Machine Shops retired by now



# 1946



- McKean Car sold and shed is boarded up.
- Shops are officially retired



# 1948



- Turntable cemented in place, tracks routed around the North end



# 1950



- Railroad abandoned and track is removed.